



SAM PELVIC SLING II TRAINING

SAM[®]
MEDICAL

SAM[®]
MEDICAL

https://www.youtube.com/watch?time_continue=2&v=-My1CTCxA4

WHY WE NEED PELVIC BINDERS


WHY WE NEED PELVIC BINDERS



Pelvic fractures are a common result of high energy impacts such as falls, crushing injuries, motor vehicle collisions, or blast injuries.

Mortality from serious pelvic injuries is high, primarily due to blood loss.

WHY WE NEED PELVIC BINDERS

-  **Pelvic binding has been shown to reduce mortality and morbidity and thereby improve outcomes in the prehospital and hospital settings by lessening internal bleeding, lowering the number of blood transfusions required, and decreasing the hospital length of stay.**

A close-up photograph of a person's leg in a blue boot and black sock, secured with a black SAM Pelvic Sling II. The sling is a wide, dark fabric band with multiple buckles and straps, designed for pelvic support. The background is a textured, light-colored surface, possibly gravel or a similar material. The overall image has a dark, semi-transparent overlay.

SAM PELVIC SLING II

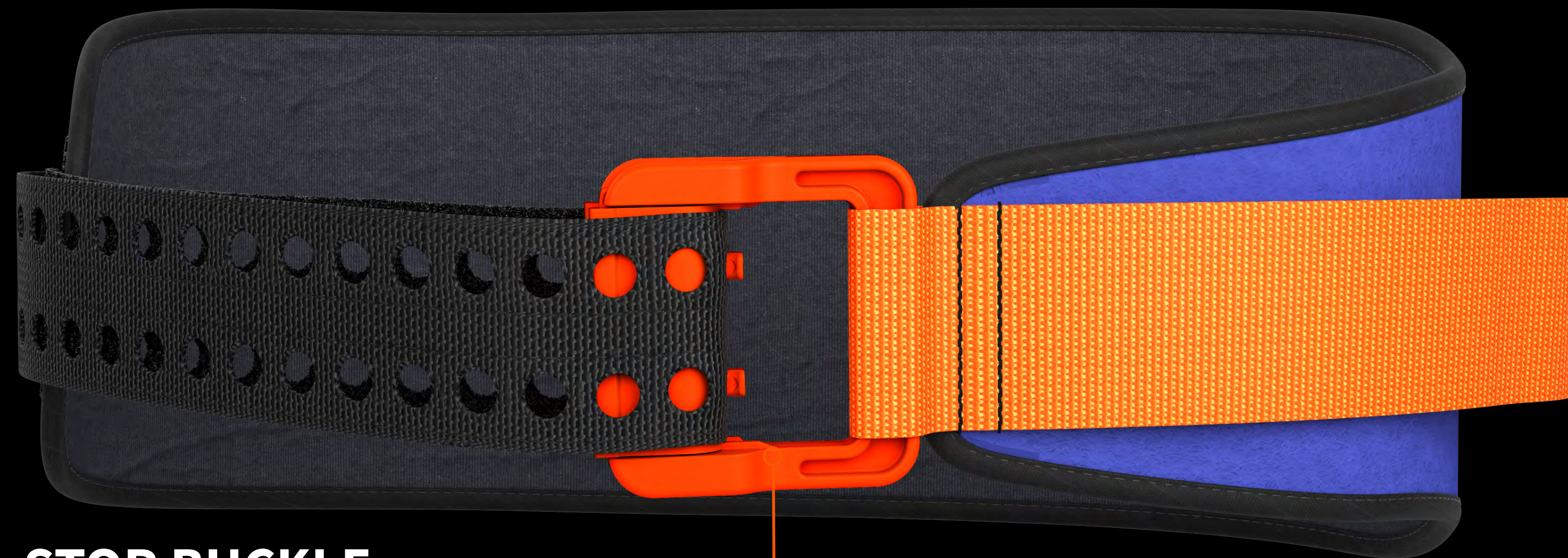
SAM PELVIC SLING II

SAM[®] Pelvic Sling II is the first and only force-controlled circumferential pelvic belt. Featuring an optimized one-piece design, it's scientifically proven to safely and effectively reduce and stabilize open-book pelvic ring fractures.

A photograph of rescue workers in orange gear attending to an injured person lying on a stretcher in a rocky, desert environment. The scene is dimly lit, suggesting dusk or dawn. The workers are focused on the patient, and the overall atmosphere is one of urgency and care. The text 'ENGINEERED TO PRESERVE LIFE' is overlaid in large, white, bold letters across the center of the image.

ENGINEERED TO PRESERVE LIFE

ENGINEERED TO PRESERVE LIFE



AUTO-STOP BUCKLE

Buckle cannot be over-tightened, maintaining correct force and sounding a “click” to provide clear feedback and confirmation of proper application.

ENGINEERED TO PRESERVE LIFE



PRECISION STRAP

Quick and secure fastening
with sturdy velcro strap.

ENGINEERED TO PRESERVE LIFE

LOW-FRICTION POSTERIOR SLIDER

Facilitates transfers
following severe trauma.



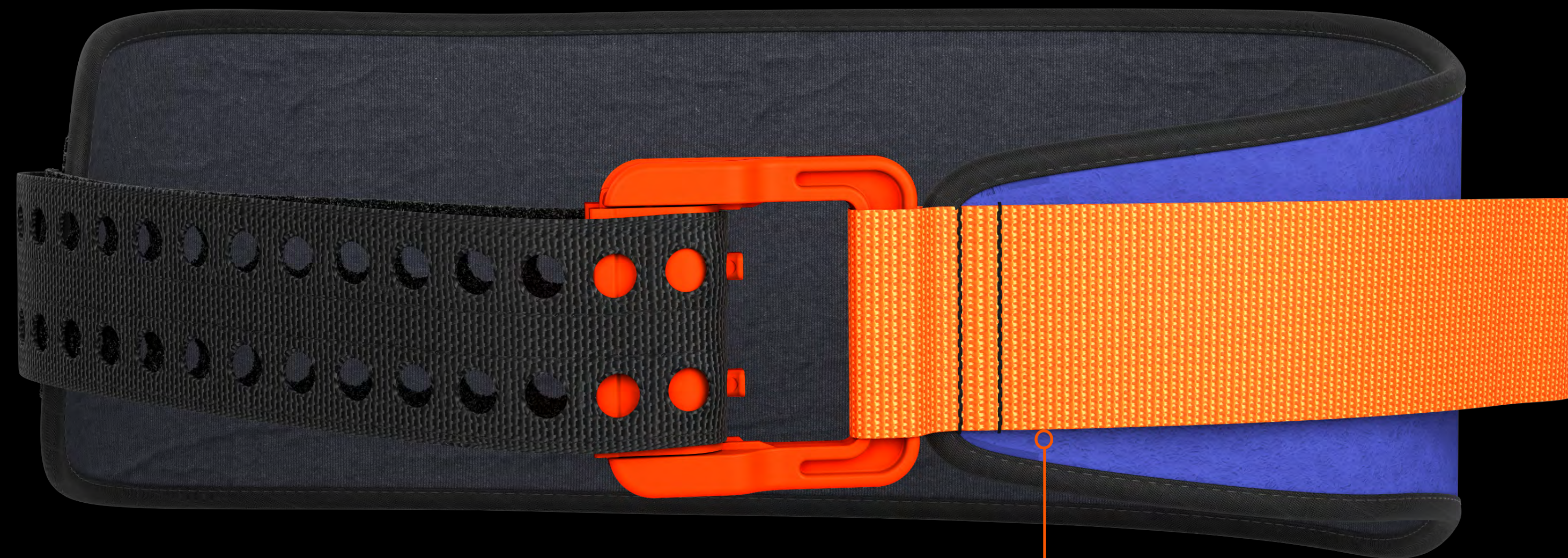
ENGINEERED TO PRESERVE LIFE



REUSABLE FABRIC

Fabric does not stretch and can be cleaned for reuse with standard detergents or antimicrobial solutions.

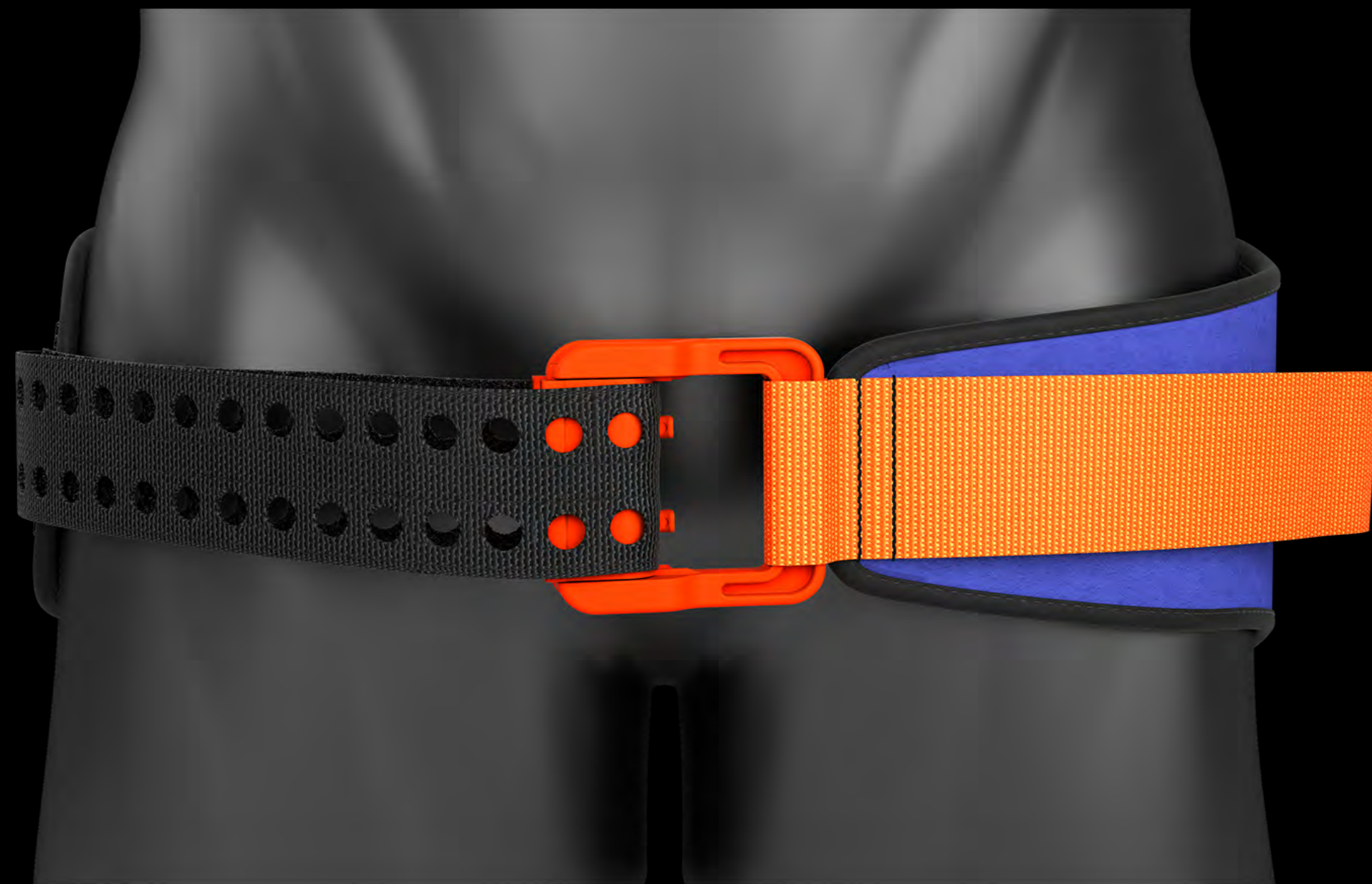
ENGINEERED TO PRESERVE LIFE



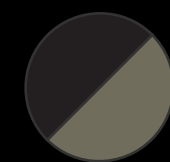
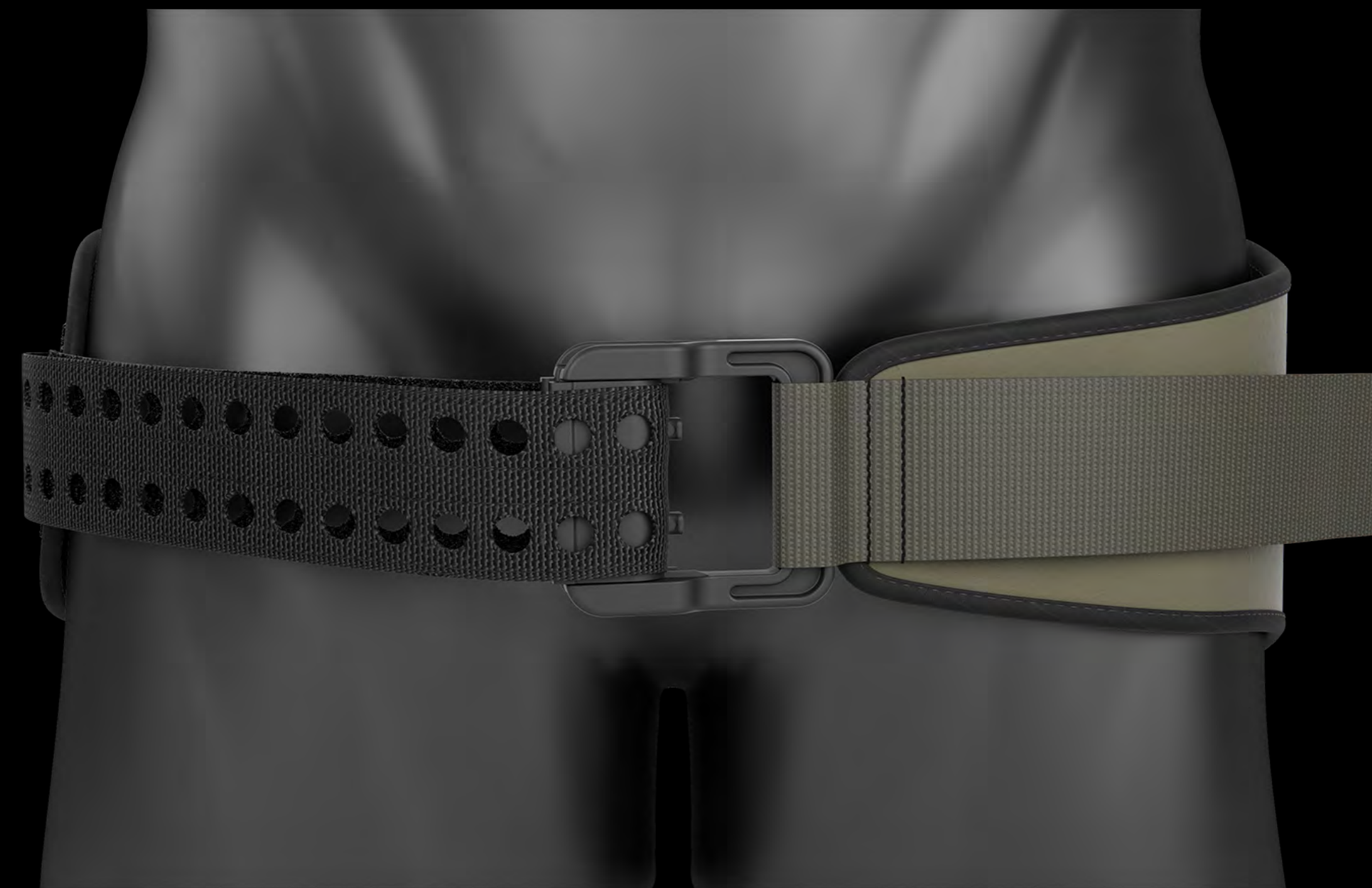
TAPERED DESIGN

The front of the sling is narrow and tapered to facilitate urinary catheterization, interventional radiology, external fixation, and abdominal surgery without removal.

TWO MODELS



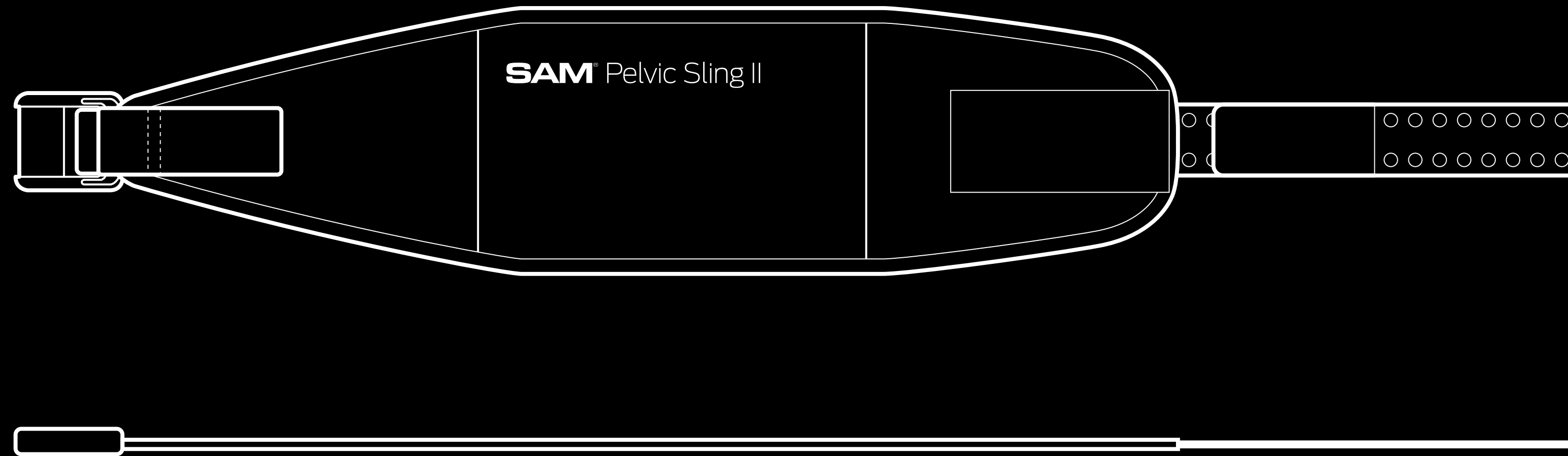
ORANGE / BLUE



OD GREEN / BLACK

THREE SIZES

AVAILABLE IN THREE SIZES



SMALL

**Hip Circumference:
27"-45" / 69-114 cm**

STANDARD

**Hip Circumference:
32"-50" / 81-127 cm**

LARGE

**Hip Circumference:
36"-54" / 91-137 cm**



WHY SAM PELVIC SLING II?

TIGHTEN WITH CONFIDENCE

TIGHTEN WITH CONFIDENCE

The patented SAM[®] AUTO-STOP Buckle acts to avoid over- or under tightening of the SAM[®] Pelvic Sling II.

Once optimal compressive force is reached, two prongs activate, clicking to confirm correct force application. The sling is secure in place with its Velcro[®] system strap.

<https://www.youtube.com/watch?v=-DB0CrKI4Es>

DESIGNED FOR COMFORT

DESIGNED FOR COMFORT

SAM[®] Pelvic Sling II is designed for maximum comfort, able to withstand extreme temperatures or exposure to hard or sharp objects, while remaining comfortable for extended durations.

Its standard size fits 95% of the adult population.

EXTENSIVELY REVIEWED

EXTENSIVELY REVIEWED

The SAM Pelvic Sling II has been extensively investigated, with studies featured in over 75 publications in peer reviewed journals such as:

EXTENSIVELY REVIEWED

THE JOURNAL OF BONE & JOINT SURGERY

THE BONE & JOINT JOURNAL

THE JOURNAL OF ORTHOPEDIC TRAUMA

THE EMERGENCY MEDICINE JOURNAL

THE AMERICAN JOURNAL OF EMERGENCY MEDICINE

READY TO USE

READY TO USE

JUST USE IT

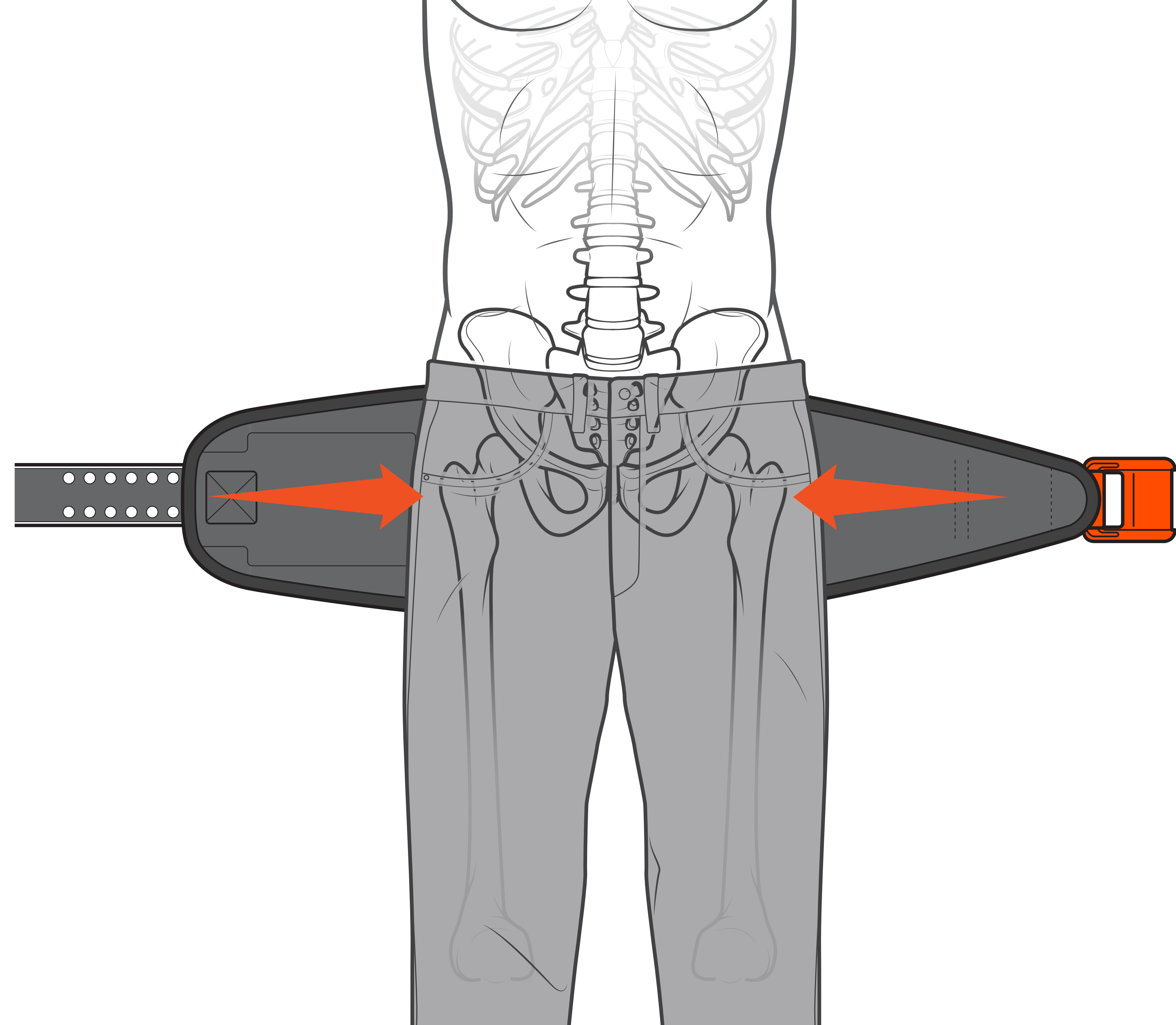
No modifications - no need to cut or trim to size.

GoTCCC RECOMMENDED

A person wearing a plaid shirt and a helmet is lying on a stretcher on a rocky ground. A person in an orange jacket is attending to them. The scene is outdoors, possibly in a mountainous or rugged area. The text "PELVIC SLING II APPLICATION" is overlaid in the center.

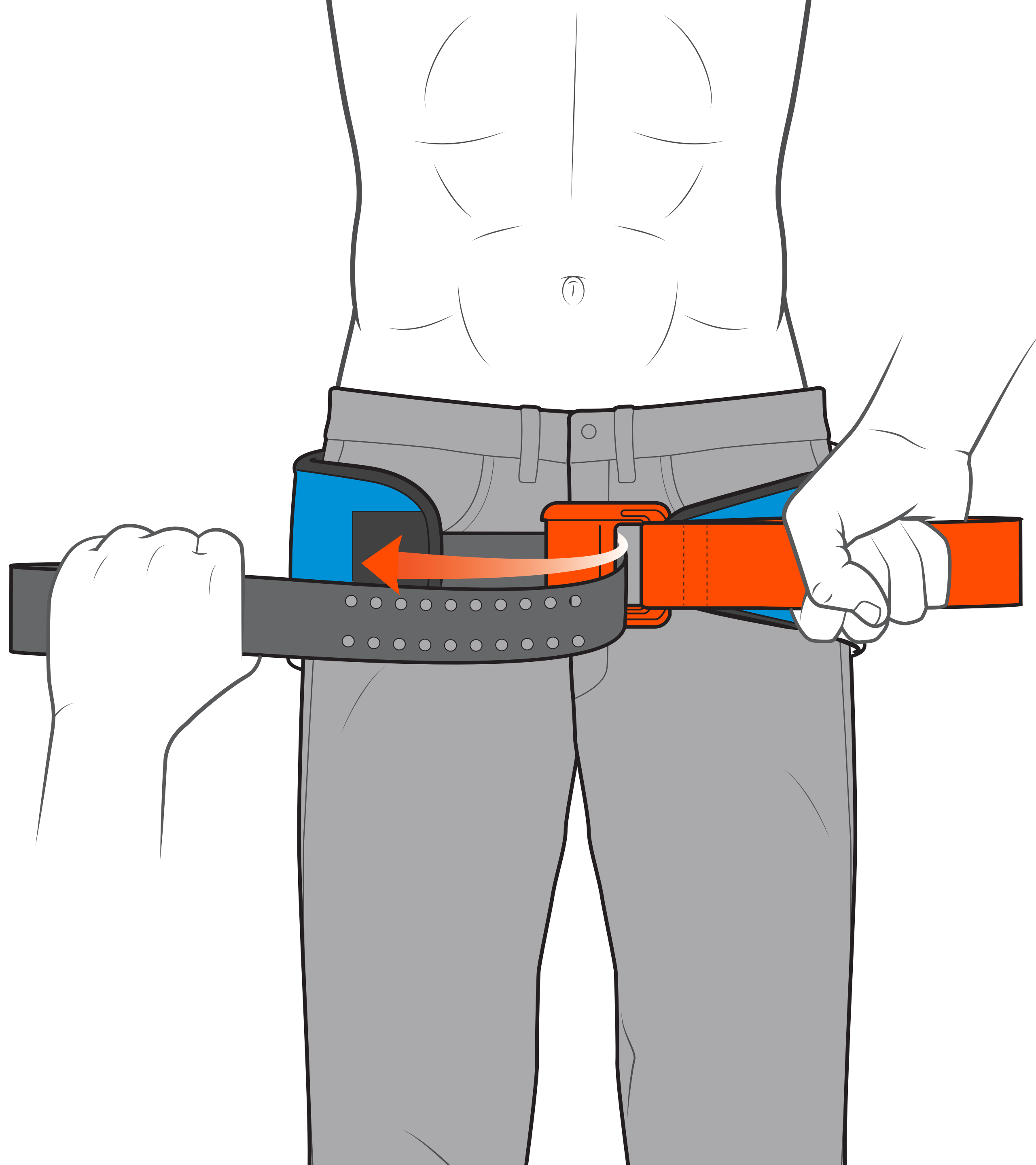
PELVIC SLING II APPLICATION

<https://www.sammedical.com/training/sam-pelvic-sling-training>



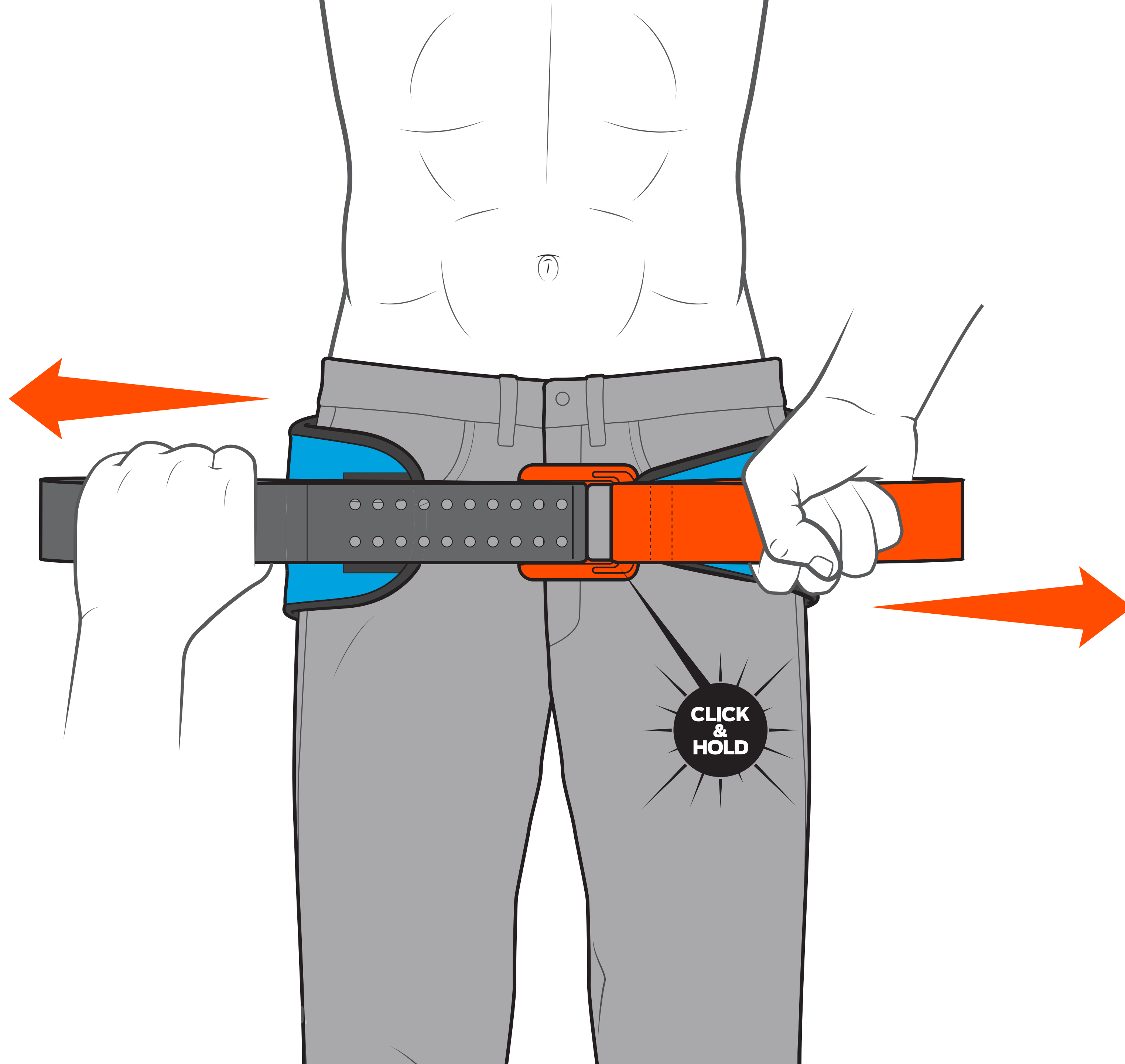
STEP 1

Remove objects from patient's pockets or pelvic area. Place SAM Pelvic Sling II black side up beneath patient at level of trochanters (hips).



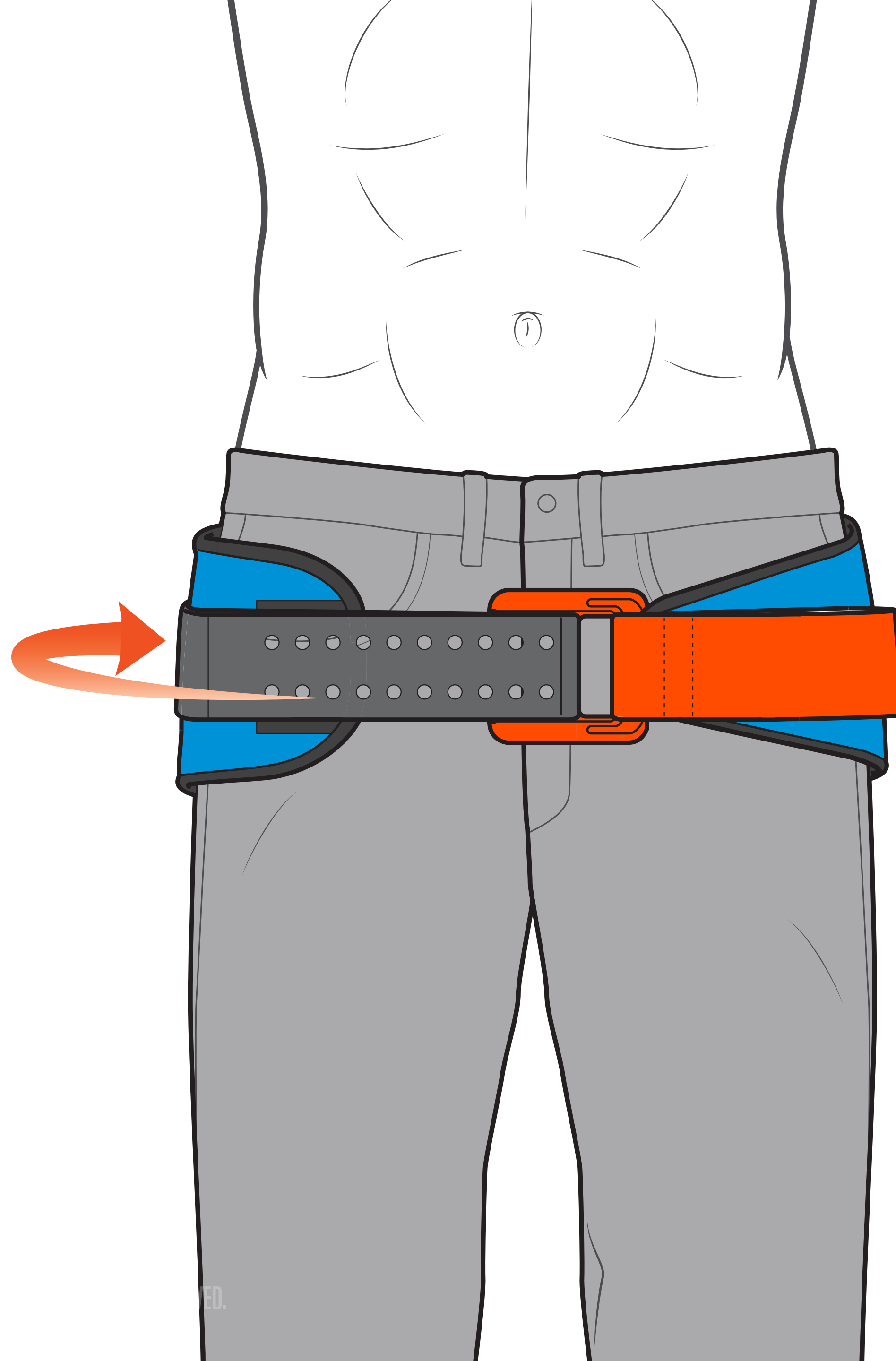
STEP 2

Place the black strap through buckle and pull completely through.



STEP 2

Hold orange strap and pull black strap in opposite direction until you hear and feel the buckle click.

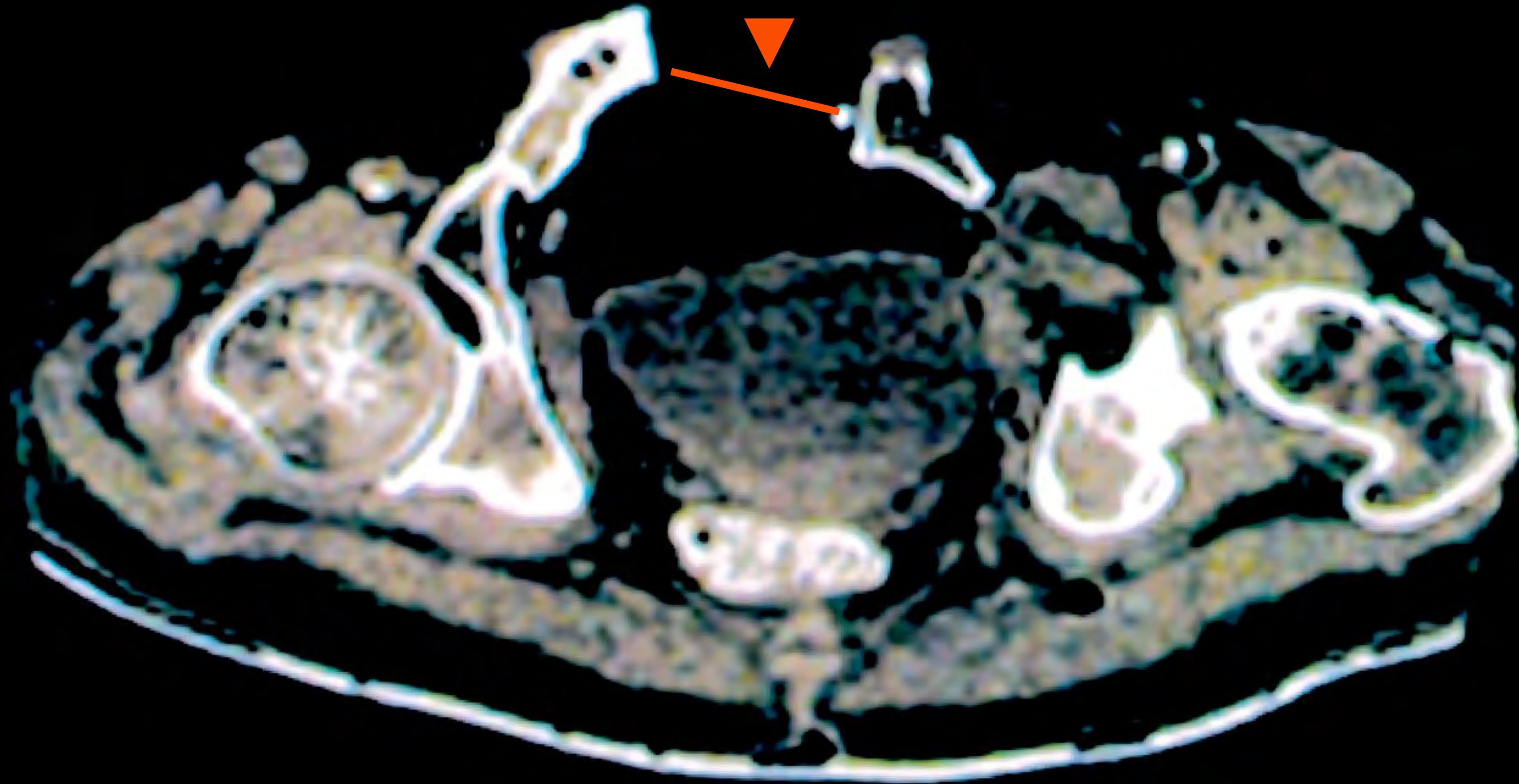


STEP 3

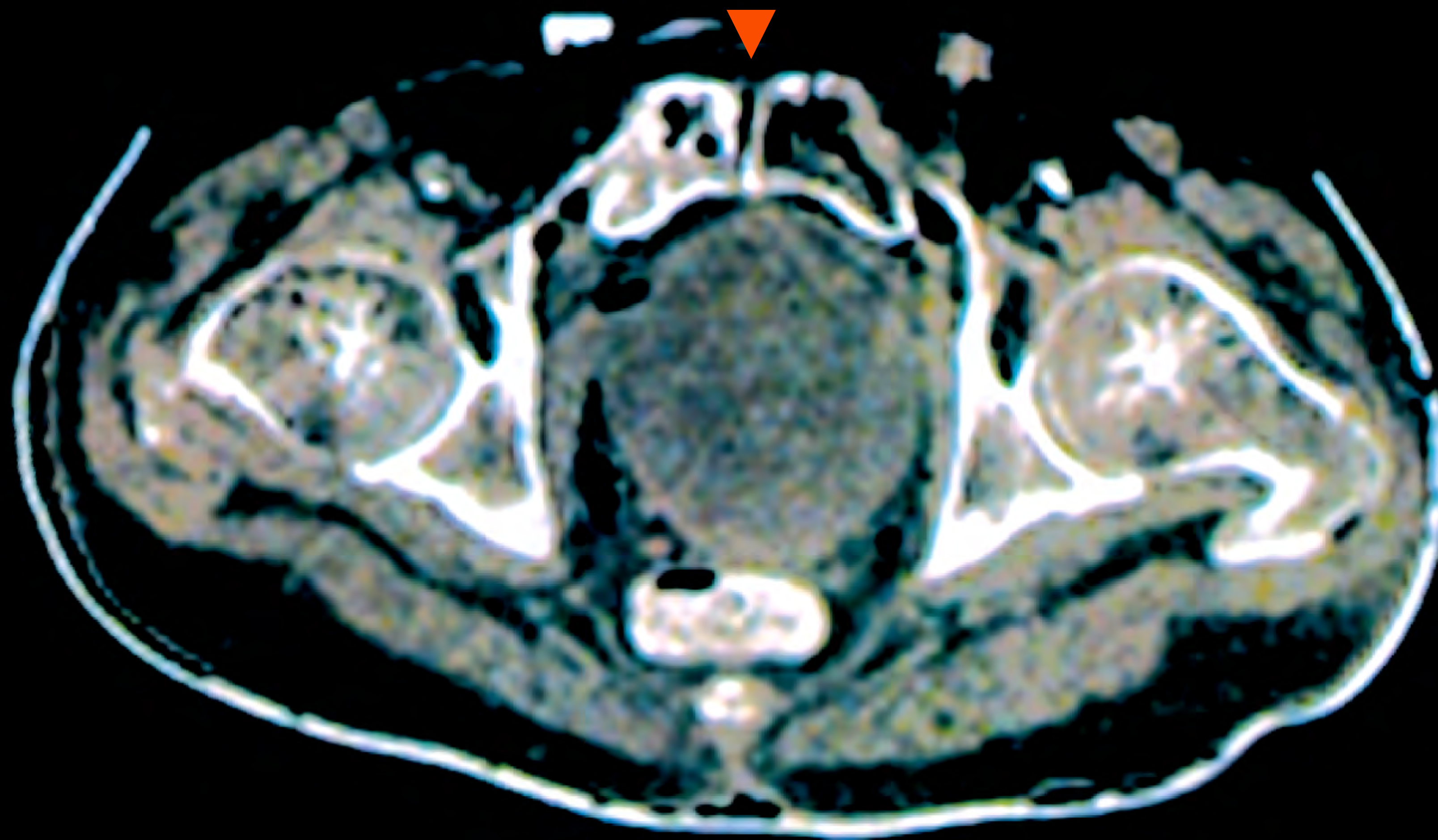
Maintain tension and immediately press black strap onto surface of SAM Pelvic Sling II to secure.

NOTE: Do not be concerned if you hear a second “click” after SAM Pelvic Sling II is secured.

BEFORE



AFTER



A group of rescue workers in orange gear are working on a stretcher on a rocky trail. The workers are wearing orange shirts and helmets, and some have "RSCIE" on their backs. They are surrounded by large rocks and sparse vegetation. A bicycle is lying on the ground nearby. The word "SUMMARY" is overlaid in large white letters in the center of the image.

SUMMARY

SUMMARY

TIGHTEN WITH CONFIDENCE

DESIGNED FOR COMFORT

EXTENSIVELY REVIEWED

READY TO USE

REGULATORY



Emergo Europe, Prinsessegracht 20,
2514 AP, The Hague, The Netherlands



RADIOLUCENT



MR-CONDITIONAL 3T



SAM Medical Products®
27350 SW 95th Ave, Ste 3038
Wilsonville, OR 97070 USA

MORE INFO

sammedical.com

THANK YOU

SAM[®]
MEDICAL

MORE THAN SURVIVAL™